

# STANDARD STOCK VESSELS

## Model 90

- ▶ 9" Inside Diameter
- ▶ 165 psi Maximum Allowable Working Pressure at 100° F
- ▶ (3) 1/4" FNPT, (1) 3/8" FNPT with Removeable 1/4" Diptube
- ▶ Molded Rubber Base
- ▶ Large 4 7/8" x 5 7/8" Oval Opening

### MODEL 90 SPECIFICATIONS

CATALOG NO.	GALLONS	LITERS	HEIGHT IN
90-1*	1.40	5.30	9 3/8
90-2*	2.13	8.05	11 5/8
90-3*	3.24	12.27	15 1/4
90-5*	5.10	19.3	22 1/2



\* Available in 304L & 316L Stainless

## Model 120

- ▶ 12" Inside Diameter
- ▶ 190 psi Maximum Allowable Working Pressure at 100° F
- ▶ (3) 1/4" FNPT, (1) 3/8" FNPT with Removeable 1/4" Diptube
- ▶ Stainless Skirt
- ▶ Large 4 7/8" x 5 7/8" Oval Opening

### MODEL 120 SPECIFICATIONS

CATALOG NO.	GALLONS	LITERS	HEIGHT IN
120-10*	10.4	39.4	25
120-16**	16	62.0	37 1/4



\* Available in 304L & 316L

\*\* Available in 316L Stainless only

## Model 180

- ▶ 18" Inside Diameter
- ▶ 140 psi Maximum Allowable Working Pressure at 100° F
- ▶ (3) 1/4" FNPT, (1) 3/8" FNPT with Removeable 1/4" Diptube
- ▶ Stainless Skirt
- ▶ Large 4 7/8" x 5 7/8" Oval Opening

### MODEL 180 SPECIFICATIONS

CATALOG NO.	GALLONS	LITERS	HEIGHT IN
180-374*	374	141.5	40 7/16



\* Available in 316L Stainless only

## On the Shelf (In-Stock) Vessels

- ▶ Sanitary Product Contact Surfaces either 304L or 316L as noted
- ▶ (3) 1/4" FNPT and (1) 3/8" FNPT with 1/4" Removeable Dip Tube
- ▶ EPDM Closure O-Rings
- ▶ Fully Passivated Pickle Finish

### Industries

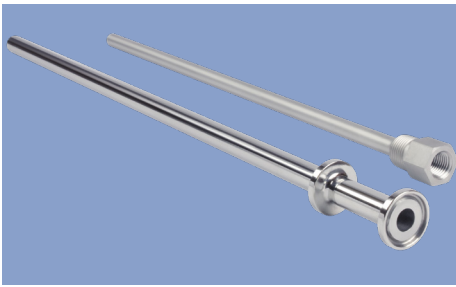
- ▶ Adhesives
- ▶ Aerospace
- ▶ Automotive
- ▶ Biogas
- ▶ Chemical
- ▶ Food Beverage
- ▶ Lubricants
- ▶ Petrochemical
- ▶ Pharmaceutical
- ▶ Sanitation
- ▶ Solvent Dispensing
- ▶ Waste Water



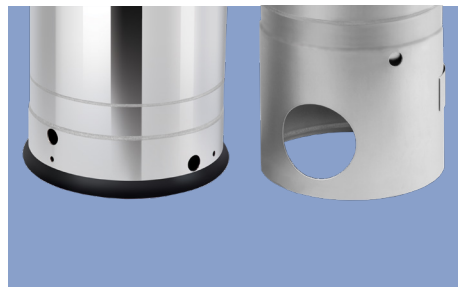
*Cart Kit is an option*

# OPTIONS & MODIFICATIONS

## Modifications



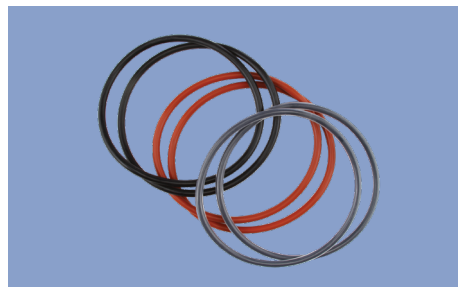
Diptubes available: NPT (standard), or tri-clamp style



Special Skirts: Extra long stainless skirts with 4" hand holes, skirts with rubber foot ring



Fittings available: NPT, BSPP, VCR, and tri-clamp ferrules



In-stock O-Rings: EPDM, Viton, Teflon Encapsulated Viton, Silicone and Nitrile



### More Options:

- ▶ 2 wheel or 4 wheel cart kits
- ▶ Lifting lugs / eyes
- ▶ Sight gauges / level tubes
- ▶ Mounting Brackets
- ▶ Legs / Stands
- ▶ Pneumatic or Electric Agitators
- ▶ Conventional / dimple jackets
- ▶ Insulation & Cladding
- ▶ Electropolishing

## Closures



Large Mouth Pressure Closure  
4 7/8" x 5 7/8"



Small Mouth Pressure Closure  
3 1/4" x 3 7/8"



Large Mouth Closure  
Also available in Small Mouth  
Large 4 7/8" x 5 7/8"  
Small 3 1/4" x 3 7/8"



**APACHE**  
STAINLESS EQUIPMENT  
CORPORATION



[www.apachestainless.com](http://www.apachestainless.com)



920.356.9900



200 W. Industrial Drive  
Beaver Dam, WI 53916

